



KARL HARRISON  
LANDSCAPES

*A creative and practical  
approach to landscaping*







Your garden is our artist's canvas

## Our philosophy

“

At Karl Harrison Landscapes we will provide the best garden design and landscaping for your new garden.

We achieve this by creating an outdoor living space with purpose and identity: realising the unique potential your garden has for you.

Sustainability is key to our approach. We ensure that we create amazing outdoor spaces that are both visually appealing and designed to harmonise with the local environment.

I hope you enjoy browsing through this brochure and find yourself inspired by how we can transform your outdoor space into a beautiful garden.”

Karl

A creative and practical approach to landscaping







## Your garden

We strive for perfection in every project we build, and our insistence on using materials of the highest quality leads to impeccable results.

We believe that our client's outdoor space should not be treated separate from the rest of their home - it should become a seamless extension of it.

This belief drives our design ethics - ensuring that we create a sustainable garden that supports the physical and mental wellbeing of our clients, whilst improving the holistic experience of their home.



## Our beliefs

The value of perfection is fuelled by our passion.

Our commitment to uniqueness, and our focus on sustainability are fundamental to the way we work.

These are all underpinned by an honest and trustworthy approach to the service we provide you.

*A creative and practical approach to landscaping*



**KARL HARRISON**  
LANDSCAPES



# Your garden journey

Step 1

## Initial Consultation

We meet you in your garden, listen to your ideas, and share our thoughts. We're convinced that after meeting us you'll be inspired by our passion and commission us to design your new garden.

Step 2

## Concept design plan

Once you commission us we meet again to carry out a comprehensive site survey, create a detailed brief, and answer any questions you may have. These details help us create a comprehensive presentation that includes a birds-eye layout plan, simple 3D sketches, and a mood board displaying our materials palette.

Step 3

## Iteration

Once you've had time to consider the concept design plan we meet again to discuss any changes you might like. We look at the finer details and also consider other aspects of your garden such as pieces of art and lighting.

Step 4

## Design Plan

Following on from the iteration meeting we present your garden to you in 3D renders with refined designs and materials choices. Plans for each aspect of your new garden are considered.

Step 5

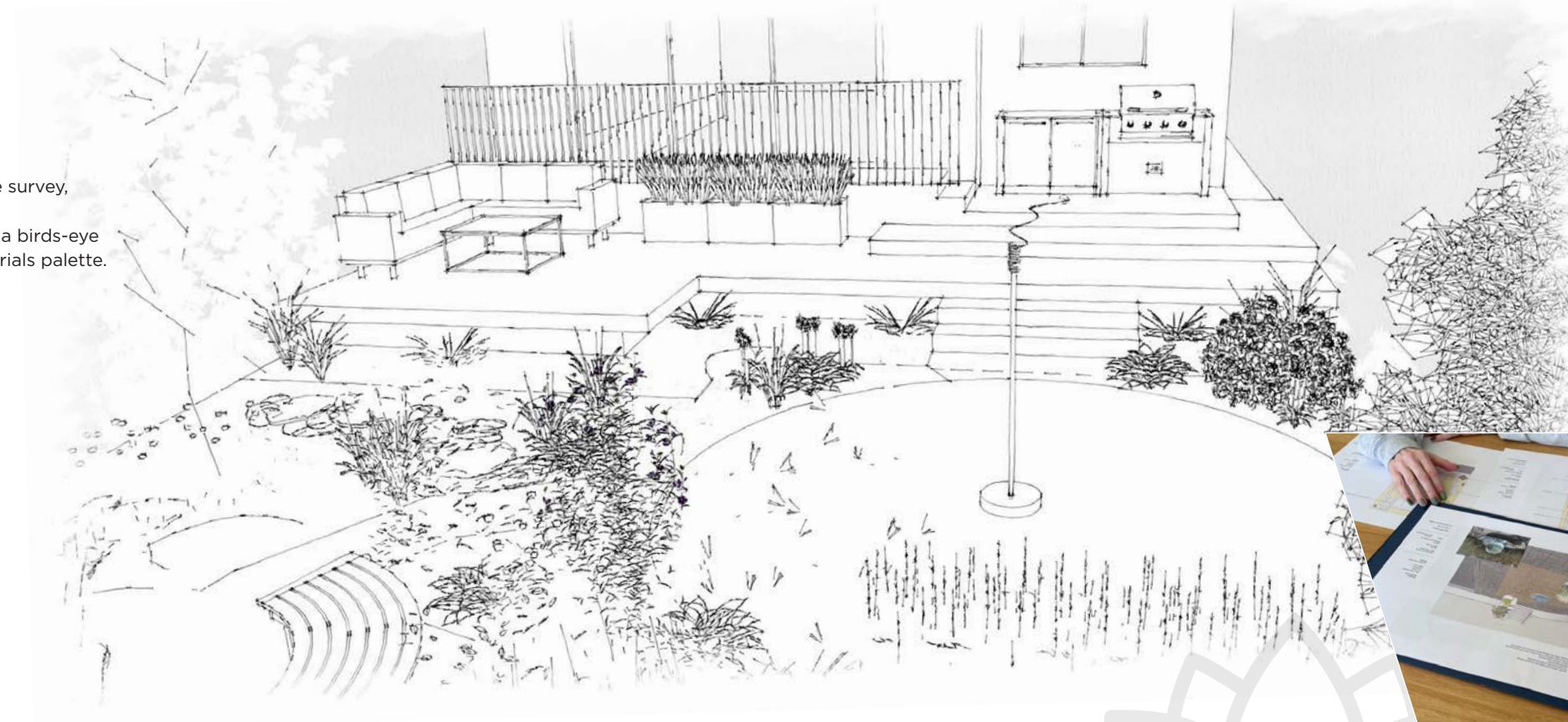
## Final presentation

Your new garden in all its glory showcased to you from every angle. Details are refined and iterated before the final landscaping quotation is agreed.

Step 6

## Landscaping

We've designed it, now let us build it. You are in the best hands with our employed team of skilled landscapers. Enjoy watching your new garden come to life.



A creative and practical approach to landscaping



KARL HARRISON  
LANDSCAPES



# Perfection

We achieve perfection in every aspect of our work by pushing ourselves to go beyond the ordinary and deliver the extraordinary.



Bird boxes give visiting birds a place to snuggle together for warmth away from the cold Winter rain and air whilst controlling pests.



Based on the success of the rear garden, we asked Karl back to design the front garden. It required space for two cars, and bike storage among other things. Once again Karl took time to discuss the design in great detail and helped us to choose materials. We are very happy with the result and highly recommend Karl and his team.

**Mr & Mrs D, Chorleywood**

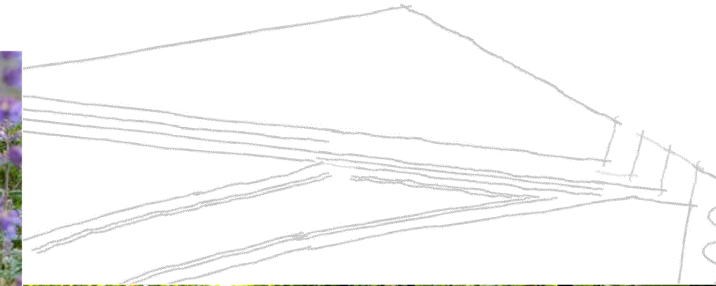
*A creative and practical approach to landscaping*





## Passion

We are passionate about what we do, and that passion resonates in every garden we landscape.



Wow. Thank you so much for creating a perfect space for our family to relax, have parties and enjoy the beautiful plants.

The space you designed for us is truly multi-purpose and multi-seasonal. It has given us a whole new part to our family living. Even the dogs and cats are happy!

We look forward to spending many happy days enjoying it.

**Mr & Mrs B, Little Chalfont**

*A creative and practical approach to landscaping*

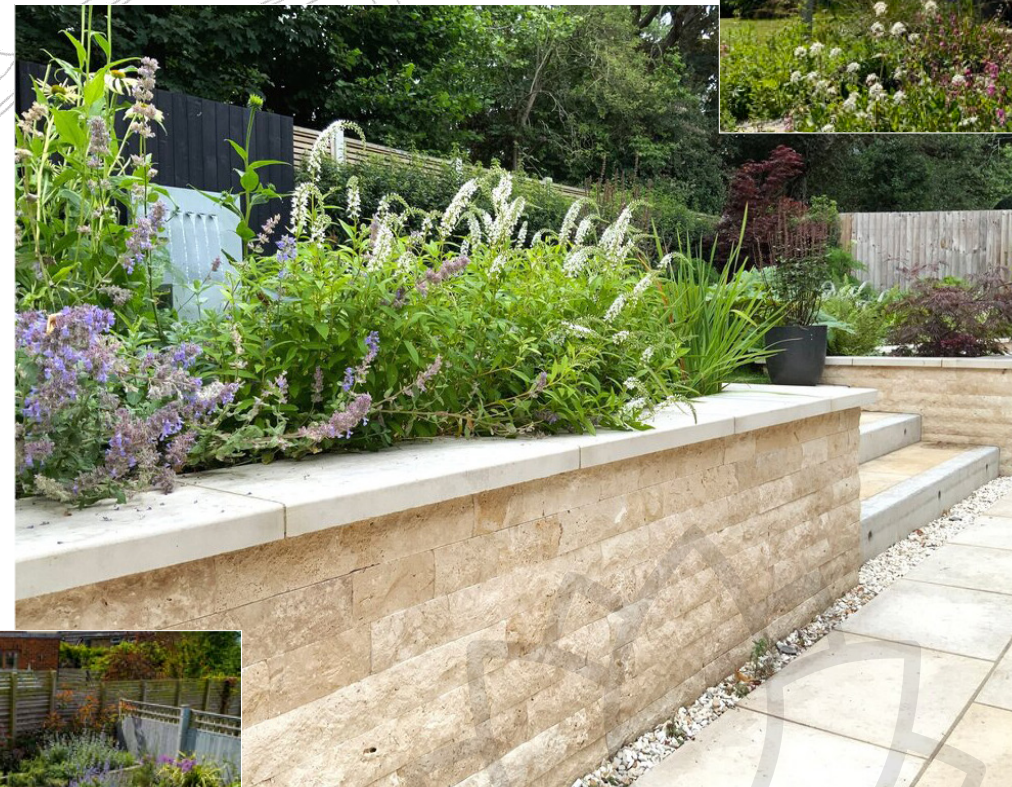


**KARL HARRISON**  
LANDSCAPES



# Unique

Every client is unique, and as creatives we insist that their gardens are too.



Having an insect hotel in your garden can provide a safe hideaway for wildlife and help make use of your garden waste.

Karl's design was an inspiration. Such a small part of our garden has now been transformed into a piece of art we see every day. Karl's design was creative: we were surprised and also impressed at the level of detail.

**Mr & Mrs B, Chesham Bois**

A creative and practical approach to landscaping

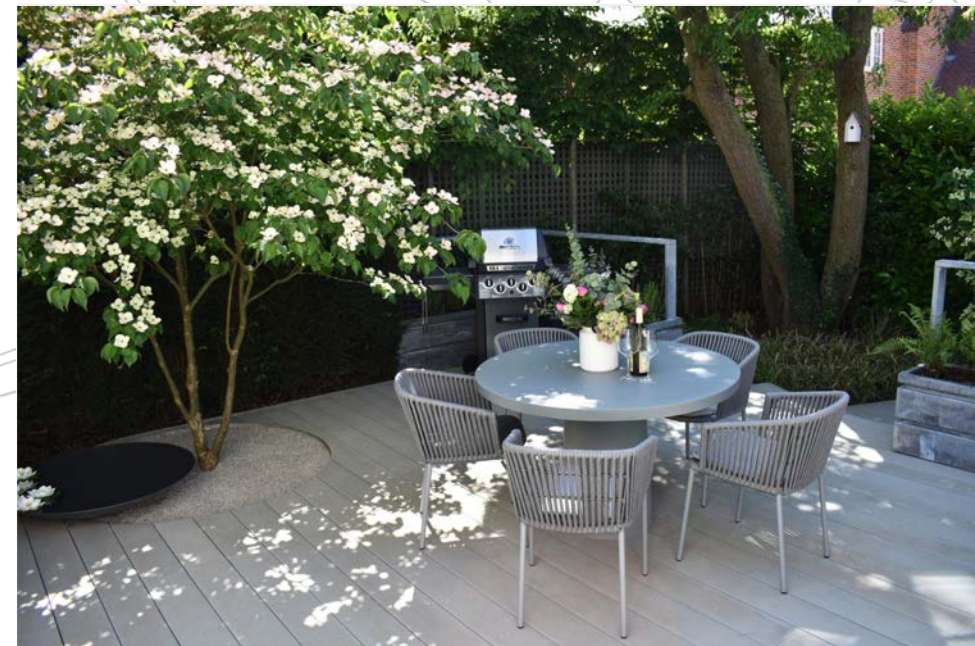


# Sustainable

We believe that by incorporating sustainability into our business practices, we contribute to a healthier planet and also inspire others to follow.



*Building a bat box gives them somewhere to roost, raise their pups and sleep during the day.*



*Karl has been a joy to work with and his passion for garden design never failed even when we reworked the plans several times to come up with a design that met our scope and was within our budget.*

*We particularly liked that Karl was involved in the detail of the build and planting and not just the design.*

*Many months later, as the trees and plants have settled in and we have witnessed the changes, it has been a pleasure to see the garden mature and give us what we envisaged.*

**Mr & Mrs A, Chesham Bois**

*A creative and practical approach to landscaping*



**KARL HARRISON  
LANDSCAPES**



*A creative and practical  
approach to landscaping*



**KARL HARRISON**  
LANDSCAPES

*Get in touch*

We'd love to meet you in your garden.

Call us, let's have a chat...

**07581 193034**

**karl@karlharrison.design**

Visit **www.karlharrison.design** to discover more about us and the gardens we've been designing and landscaping for over 20 years.

**We're based in Amersham, Buckinghamshire**